



NATURE & ANIMALS QUIZ

If you get stuck, you can find answers and helpful information on Britannica School.



Question 1:

During the first two billion years of Earth's history our planet had very little:

- * Water
- Oxygen
- Land
- Life

Question 2:

What is the scientific term for classifying, or categorizing, living things?

- * Taxonomy
- Taxidermy
- Taxology
- Taxation

Question 3:

What makes the raft spider special?

- * It can weave webs of gold
- It can jump extremely high
- It can kill rats
- It can walk on water

Question 4:

Where is the Nival Zone located?

- * Deep under the oceans
- High up on mountains
- In the hottest parts of deserts
- On ice caps

Question 5:

Limestone rocks near the top of Mount Everest contain:

- * Gold
- Seashells
- Pumice
- Weevils

Question 6:

The banded archerfish knocks its insect prey off of hanging branches by:

- Throwing twigs
- Singing songs
- Spitting water
- Leaping through the air

Question 7:

About how many human cells could fit on the head of a pin?

- 10
- 100
- 1,000
- 10,000

Question 8:

Mudskippers are fish that:

- Get oxygen through their skin
- Sleep on the seafloor
- Dig tunnels underground
- Hop on one fin

Question 9:

Some female anglerfish can:

- Produce their own light
- Walk on the bottom of the ocean
- Breathe on land
- Grow their own food

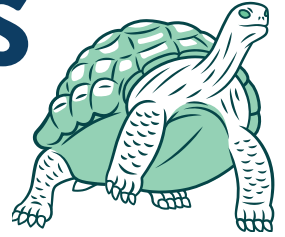
Question 10:

An *aurochs* was a type of wild:

- Pig
- Horse
- Ox
- Ostrich



NATURE & ANIMALS WORD SEARCH



M	T	C	N	I	T	X	E	X	F	V	N	B	I	J	T	P	U	U	H
O	I	H	T	K	G	S	Y	E	K	E	X	O	Z	O	A	I	V	N	I
H	Q	C	I	C	T	T	E	A	X	R	V	I	I	G	H	L	P	Y	Q
Y	S	G	R	G	E	R	T	N	G	T	F	K	I	T	D	C	Y	O	B
M	M	Q	H	O	L	S	Q	S	G	E	G	A	L	F	U	O	M	A	C
E	P	I	Q	A	O	M	N	F	G	B	T	Q	R	H	C	L	R	T	G
T	Q	G	R	Z	W	R	A	I	R	R	Z	X	O	F	Z	S	O	U	K
S	U	O	G	L	V	R	G	A	Z	A	P	T	C	Z	F	Z	W	V	I
Y	C	O	A	P	M	T	I	A	Q	T	C	S	K	Q	O	W	A	B	E
S	L	D	Z	I	F	N	X	V	N	E	L	E	P	F	O	Q	U	D	X
O	M	V	N	N	F	M	B	T	Q	I	V	V	O	L	O	D	W	Q	E
C	D	G	N	O	V	H	S	J	A	C	S	N	O	I	V	X	W	F	M
E	H	E	R	B	I	V	O	R	E	X	G	M	L	W	F	S	A	O	L
J	H	E	D	S	I	Z	I	M	O	C	O	L	G	H	T	F	C	M	I
F	S	Y	N	T	G	Q	W	N	R	G	Z	N	N	D	W	O	U	I	P
T	T	N	T	V	N	X	S	L	E	V	H	R	O	R	X	O	S	K	M
S	V	F	P	Y	U	V	S	Z	H	J	O	H	H	M	A	Y	J	M	F
K	G	I	O	W	F	U	K	M	T	C	R	D	R	Y	Y	G	F	F	K
G	O	R	V	V	O	Q	B	S	C	K	Y	X	N	Q	X	G	B	N	A
X	J	Z	C	R	G	C	I	K	A	B	T	F	N	C	K	K	W	Q	J

Can you find all these Natural Life related words?
They can be found going up, down, diagonal, side to side and backwards!

CAMOUFLAGE
CORAL REEF
ECOSYSTEM
EVOLUTION
EXTINCT

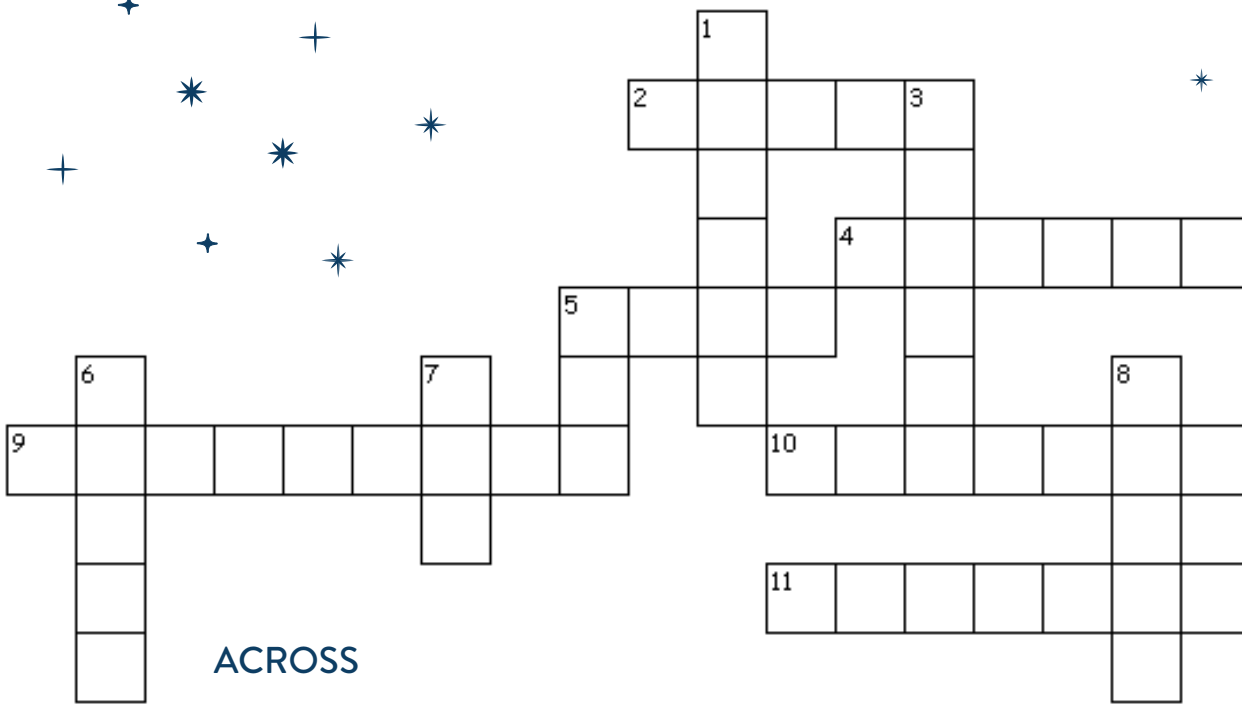
FARMING
FUNGI
HERBIVORE
INSECT
MICROORGANISM

RAINFOREST
ROCKPOOL
TAIGA
TAXONOMY
VERTEBRATE

NATURE & ANIMALS CROSSWORD



These facts can be found on Britannica School.



ACROSS

- 2 This black and white animal lives in China and eats bamboo (5)
- 4 Scientist Charles _____'s theory that all living things, including humans, evolved through natural selection shocked the world (6)
- 5 This type of whale is the largest animal in the world - it can grow to be the length of a whole basketball court! (4)
- 9 The name you give to an animal that only eats plants (9)
- 10 In Antarctica, the male bird looks after the egg by balancing it on his feet, while the mother goes off to catch fish (7)

A creature with eight legs that lives under the sea (7)

DOWN

- 1 A prickly plant that can live in the desert with very little water (6)
- 3 The world's largest rainforest, which can be found in South America (6)
- 5 This insect pollinates flowers, makes honey, and can also sting you! (3)
- 6 Another black and white animal, closely related to a horse (5)
- 7 This common household pet comes in hundreds of different breeds, that all evolved from one ancient species of wolf (3)
- 8 This type of parasite can cause diseases, such as flu, chickenpox, measles and Covid-19 (5)